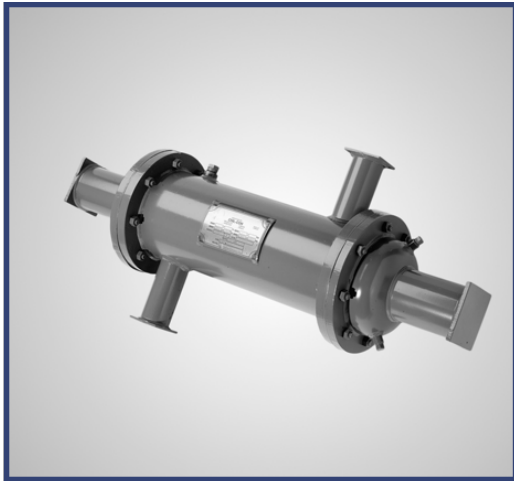


SUB-FLOOR BRINE HEATERS

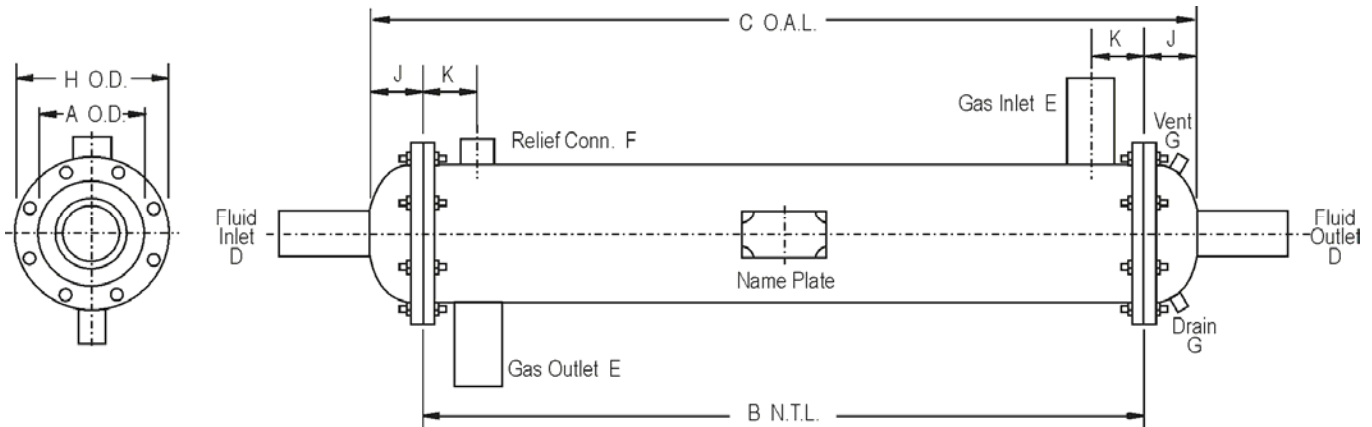


Suitable for Ammonia



Specifications:

- **Straight through tube construction** with removable heads at both ends; includes gas inlet and outlet, relief connections on the shell; brine inlet and outlet; vent and drain connections on the heads
- **Construction** to Section VIII of the ASME Code and CSA B-51, B-52, and C-22.2 Codes; available with U symbol stamp (National Board approval) when required
- **Working Pressures:** Shell side is 250 P.S.I.;
Tube side is 150 P.S.I.
- **Tubes:** 3/4 O.D. 16 gauge SA-179 seamless carbon steel
- **Seal welded tube to tube** sheet joint to eliminate failures due to thermal shock



Catalog Number	Cap. MBTU /Hr	Brine Flow GMP Max	Brine Flow GMP Min	Dimensions in Inches										Ship Wt. Lbs.
				A	B	C	D	E	F	G	H	J	K	
CBH-05024-100	66	112	42	5 9/16	24	27 1/2	2 1/2	2	3/4	3/8	9	1 3/4	3	115
CBH-05042-100	115	112	42	5 9/16	42	45 1/2	2 1/2	2	3/4	3/8	9	1 3/4	3	150
CBH-06024-100	122	208	78	6 5/8	24	31	3	2	3/4	3/8	10 1/8	3 1/2	3	145
CBH-06042-100	210	208	78	6 5/8	42	49	3	2	3/4	3/8	10 1/8	3 1/2	3	180
CBH-08024-100	198	336	126	8 5/8	24	29 1/2	4	2 1/2	3/4	3/8	12 1/8	2 3/4	4	205
CBH-08042-100	345	336	126	8 5/8	42	47 1/2	4	2 1/2	3/4	3/8	12 1/8	2 3/4	4	260

Custom units available upon request.