

# LIQUID LINE FILTER

Driers / Strainers / Shells

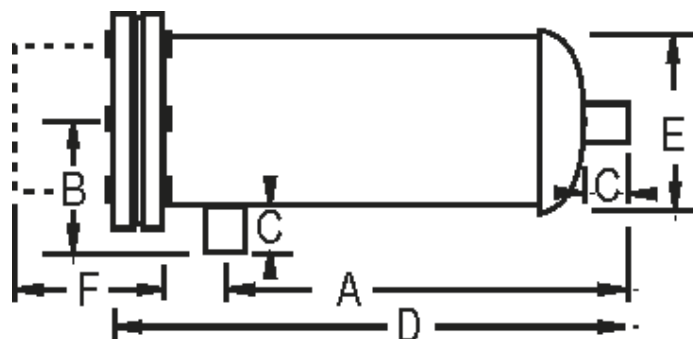


### Features:

- **Shell:** Steel corrosion resistant finish
- **Cover plate:** Aluminum
- **Fittings:** Wrought Copper
- **Shells and Cores:** Interchangeable with standard competitor models
- **Flange cover plate:** Plugged 1/4" FPT connection for Access Valve
- **Packaging:** Shells include the required number of core spacer plates and springs
- **Pressure rating:** Shells have a max. working pressure of 500 PSI (34.5 Bar)
- **Maximum temperature rating:** +275° F (+135° C)
- **Filter removal:** Dimension "F" is the minimum space required to remove the filter-drier core from the shell.

\*\* Recommended tonnage rating, based on both drying and flow capacity, is shown in table. For Refrigerants 500 and 502, use data shown for Refrigerant R12 for Refrigerant 134A, use data shown for Refrigerant 22.

\*For flow capacity of Refrigerant 502, use 90% of Refrigerant 12 flow capacities.



Shell Catalog Number	Size O.D.S Conn	Dri-Cor®				Cores		Core Data		Shell Dimensions in Inches						Wt. Lbs
		Recommended Cap. Tons**		Flow Cap. @ 2 psi in Tons		Qty.	Cat. No.	Vol. Cu. In.	Surface Area Sq. In.	A	B	C	D	E	F	
		R12*	R22	R12	R22											
V8048-5/8	5/8	10	15	18	23	1	848-C or 848-CM	48	64	6.00	3.50	.50	9.00	4.75	6.75	12.0
V8048-7/8	7/8	15	20	38	49	1		48	64	6.13	3.75	.75	9.13	4.75	6.75	12.0
V8048-1 1/8	1 1/8	15	20	58	75	1		48	64	6.25	3.88	.94	9.25	4.75	6.75	12.0
V8048-1 3/8	1 3/8	15	20	78	101	1		48	64	6.38	4.00	1.00	9.38	4.75	6.75	12.0
V8048-1 5/8	1 5/8	15	20	97	125	1		48	64	6.50	4.00	1.13	9.50	4.75	6.75	12.0
V8096-7/8	7/8	20	30	40	52	2		96	128	11.63	3.75	.75	14.34	4.75	12.25	15.0
V8096-1 1/8	1 1/8	20	30	60	77	2		96	128	11.75	3.88	.94	14.88	4.75	12.25	15.0
V8096-1 3/8	1 3/8	30	40	80	103	2		96	128	11.88	4.00	1.00	15.00	4.75	12.25	15.0
V8096-1 5/8	1 5/8	30	40	101	130	2		96	128	12.00	4.00	1.13	15.00	4.75	12.25	15.0
V8096-2 1/8	2 1/8	30	40	140	180	2		96	128	12.13	4.13	1.38	15.13	4.75	12.25	15.0
V8144-1 1/8	1 1/8	40	50	62	80	3	810-CM	144	192	17.38	3.88	.94	20.38	4.75	17.75	18.0
V8144-1 3/8	1 3/8	50	60	84	108	3		144	192	17.50	4.00	1.00	20.50	4.75	17.75	18.0
V8144-1 5/8	1 5/8	50	60	105	135	3		144	192	17.63	4.00	1.13	20.63	4.75	17.75	18.0
V8192-1 5/8	1 5/8	75	90	109	141	4		192	256	23.13	4.00	1.13	26.50	4.75	23.25	21.0
V8192-2 1/8	2 1/8	75	90	149	192	4		192	256	23.25	4.13	1.38	26.63	4.75	23.25	21.0
V8300-2 1/8	2 1/8	100	125	153	197	3		300	294	24.13	5.38	1.38	28.75	6.00	6.63	45.0
V8400-2 5/8	2 5/8	135	165	195	252	4	400	392	31.18	5.88	1.50	35.75	6.00	6.63	52.0	

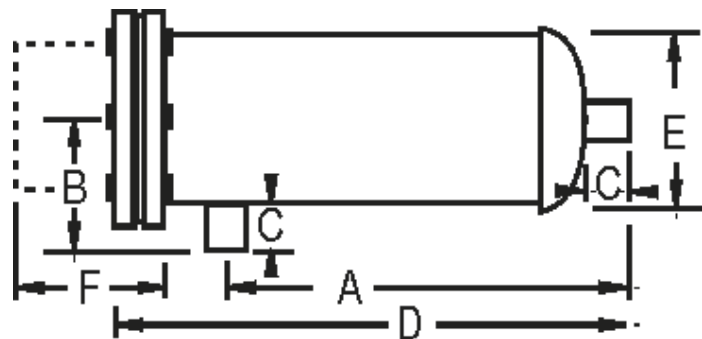
# FILTER DRIER SHELLS

## Replaceable Core Type



### Features:

- **Shell:** Steel corrosion resistant finish
- **Cover plate:** Aluminum
- **Fittings:** Wrought Copper
- **Shells and Cores:** Interchangeable with standard competitor models
- **Flange cover plate:** Plugged 1/4" FPT connection for Access Valve
- **Packaging:** Shells include the required number of core spacer plates and springs
- **Pressure rating:** Shells have a max. working pressure of 500 PSI (34.5 Bar)
- **Maximum temperature rating:** +275° F (+135° C)
- **Filter removal:** Dimension "F" is the minimum space required to remove the filter-drier core from the shell.



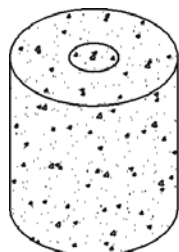
SW—Suitable for Ammonia

Socket Weld Connection	Shell Catalog Number	Qty.	Core Data		Shell Dimensions in Inches						Weight. lbs
			Volume Cu. In.	Area Sq. In.	A	B	C	D	E	F	
1	V8048-1SW	1	48	65	6.25	4.00	0.63	9.63	4.50	6.75	13.0
1-1/4	V8096-1 1/4SW	2	96	130	12.00	4.13	0.69	15.38	4.50	12.75	16.0
1-1/2	V8144-1 1/1SW	3	144	195	17.63	4.00	0.75	21.00	4.50	17.75	19.5
2	V8192-2SW	4	192	260	22.25	4.38	0.88	25.63	4.50	23.25	22.5

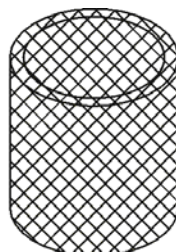
### Filters and Strainer Cores

Core Cat. No.	Core Type	Volume or Area	Length Inch	Wt. Lbs.
848-C	Filter	48 Cu. In.	5.5	3.0
848-ST	Strainer	65 Sq. In.	5.5	1.5

#### "DRI-COR" Filter Core



Molded core provides micron filtration



#### Strainer Core

Replaceable core type strainers are 100 mesh welded seam monel screen. Reinforced with inner perforated tubular steel plated shell