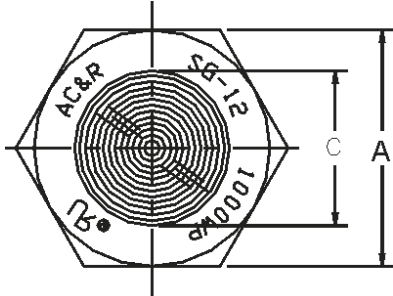
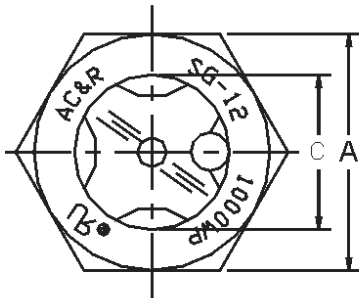
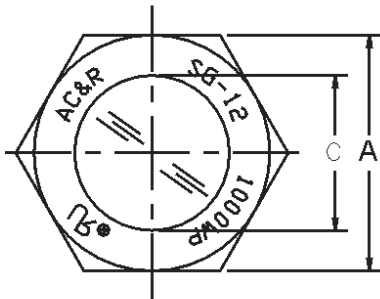


Reflect Lens

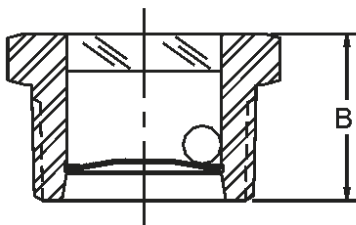


Clear Lens



Clear Lens with Floating Ball.

*Not for ammonia service



These sight glasses are available in three basic styles; Clear Lens; Reflex Lens; and Clear Lens with Floating Ball. All sight glasses feature a nickel plated steel body, hermetically sealed viewing lens, American standard tapered pipe thread, 1000 PSI maximum working pressure. These sight glasses are suitable for most standard refrigerants, and other industrial fluids non-corrosive to glass and steel (for R-11 applications, an aluminum ball is available for the SG-1200's add "C" suffix i.e. SG-1206C). The SG-1000's & SG-1100's are rated for a maximum temperature of 500°F (260°C). The SG-1200's are rated for a maximum temperature of 300°F (148°C). The SG-1100's (Reflex Lens) look dark when liquid is present and light when liquid is absent.

Catalog Number			Dimensions (Inch)			Thread Size M.P.T.
Clear	Reflex	Clear w/ Ball	Hex. A	Length B	Dia. C	
SG-1004	SG-1104	SG-1204	0.94	0.90	0.56	1/2"
SG-1006	SG-1106	SG-1206	1.12	1.06	0.75	3/4"
SG-1008	SG-1108	SG-1208	1.38	1.32	0.94	1"
SG-1010	SG-1110	SG-1210	1.75	1.25	1.19	1 1/4"
SG-1012	SG-1112	SG-1212	2.00	1.41	1.31	1 1/2"
SG-1016	SG-1116	SG-1216	2.50	1.28	1.63	2"

LIQUID INDICATORS, Bulls-Eye With Reflex Lens and Frost Shield

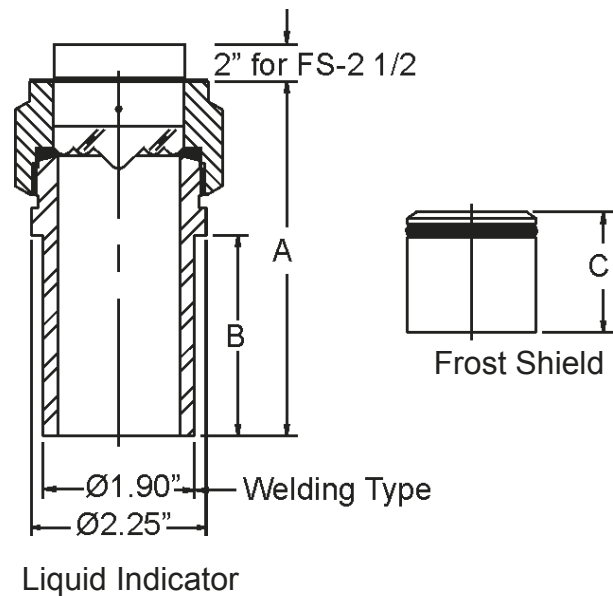


Suitable for Ammonia



Features:

- **Plated steel construction**, weld type housing ASME SA-36 (ASTM A36)
- **Maximum working pressure:** 500 P.S.I. (35.1 Kg/cm²)
- **Temperature rating:** -40°F (-40°C) to +250°F (+121°C)
- **Type LI-50 reflex glass:** Reflex lens can indicate the actual level of a liquid without requiring the installation of a second indicator for light admission. Due to the reflex lens configuration, it appears dark in the presence of a liquid, and light when liquid is absent
- **Frost shield:** FS-2-1/2 (Not supplied with indicator) To properly view systems internal liquid level under frosting conditions or when insulation is involved, a frost shield should be employed
- **Recommended** for use as a sight glass for oil, gas or liquid ammonia
- **Meets current edition of ASME** Boiler and Pressure Vessel Code, Section VIII, Division 1 UG-11 (a) (1)



Item	Size & Type Connection	Catalog Number	Dimensions in Inches		Weight lbs.
			A	B	
Reflex Lens	Weld	LI-50-2W	2.75	0.75	1.5
Reflex Lens	Weld	LI-50-4W	4.50	2.50	2.0

Item	Catalog Number	Use to Temperature	Dimension C
Frost Shield	FS-2-1/2	Below -20°F	2.50



LIQUID INDICATORS

Cap Type with Double Port

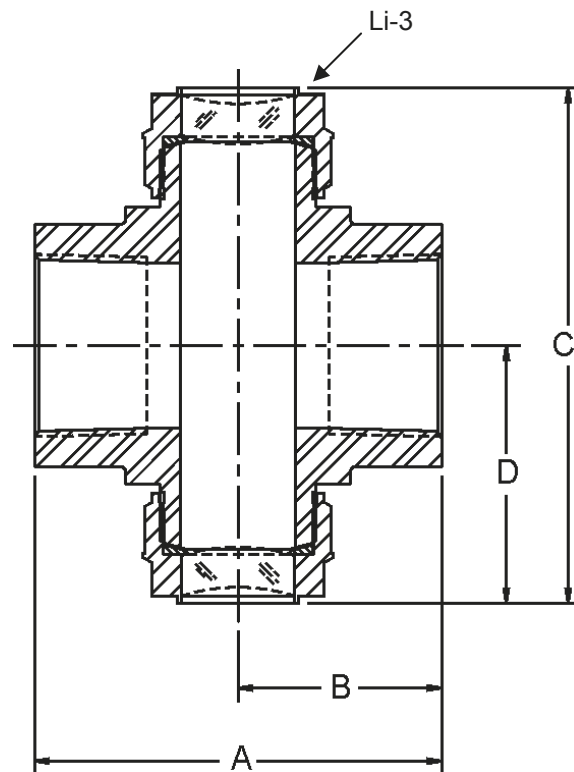


Suitable for Ammonia



Features:

- Plated ductile iron and steel construction
- Fused glass viewing window
- Maximum working pressure: 500 P.S.I. (35.1 Kg/cm²)
- Temperature rating: -20°F (-29°C) to +250°F (+121°C)
- Recommended for use as a sight glass for oil, gas or liquid ammonia
- Replacement viewing window and sealing parts available
- Replacement Cap: Li-3



Catalog Number	Size Connections	Dimensions in Inches			
		A	B	C	D
LI48A-1/2	1/2" F.P.T.	3.00	1.50	3.75	1.88
LI48A-3/4	3/4" F.P.T.	3.00	1.50	3.75	1.88
LI48A-1	1" F.P.T.	3.00	1.50	3.75	1.88

